

8 SCHEMATIC DIAGRAMS

8.1. SCHEMATIC DIAGRAM & CIRCUIT BOARD LAYOUT NOTE

1. Important safety notice

- Components identified by the sign Δ have special characteristics important for safety. When replacing any of these components. Use only the specified parts.
- Do not use the part number shown on this drawing for ordering. The correct part number is shown in the parts list, and may be slightly different or amended since this drawing was prepared.
- Use only original replacement parts:
To maintain original function and reliability of repaired units, use only original replacement parts which are listed with their part numbers in the parts list section of the service manual.
- Parts different in shape or size may be used.
However, only interchangeable parts will be supplied as service replacement parts.
- Test point information
 - \odot :Test point with a no test pin.

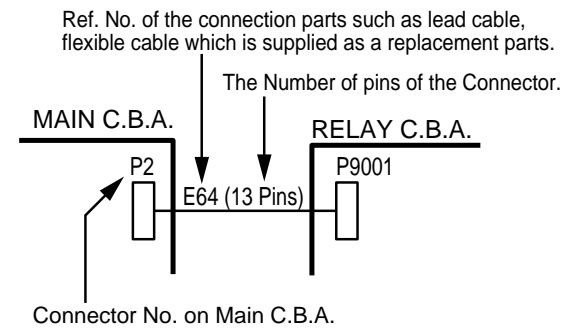
Schematic Diagram Notes

1. Indication for Zener Voltage of Zener Diodes
The Zener Voltage of Zener Diodes are indicated as such on Schematic Diagrams.

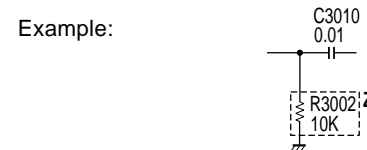
Example:
(6.2V).....Zener Voltage

2. How to identify Connectors
Each connector is labeled with a Connector No. and Pin No. Indicating what it is connected to, in other words, its counter part.
Use the interconnection schematic diagram to find the connection between associated connectors.

Example:
The connections between C.B.A.s are shown below.

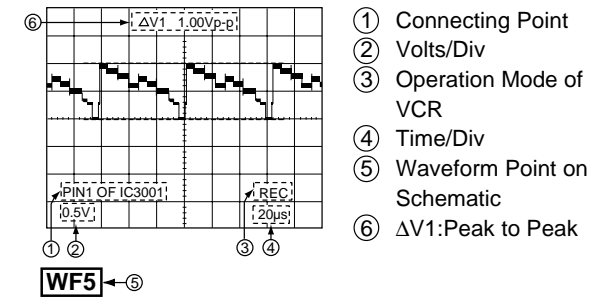


3. Parts enclosed in dashed lines marked "Z" are not used in any models included in this service manual.



Signal Waveform Note

How to read Signal Waveform



Voltage Chart Note

Voltage Measurement

- a. Color bar signal in SP mode.
- b. ---: Unmeasurable or not necessary to measure.

Circuit Board Layout Note

Circuit Board Layout shows components installed for various models.
For proper parts content for the model you are servicing, please refer to the schematic diagram and parts list.

NOTE:

Circuit Board Layout includes components which are not used.

Comparison chart of models & marks

MODEL	MARK
PV-L750	A
-----	B
PV-L780	C
PV-L850	D
Not Used	Z

Note:

Refer to item 3 of Schematic Diagram Notes for mark "Z".